

* incl. 20 [-5; +30] mm pull out

3D model is available on request or www.hyva.com

Specifications		Max. pump flow		Tipping time	
Max. working pressure	250 bar	With KO ¹	220 L/min	With KO ¹	13 sec
Weight	227 kg	Without KO ¹	162 L/min	Without KO ¹	17 sec
Working volume	47 L	With KO ¹ below -20°C	154 L/min	With KO ¹ below -20°C	19 sec
Total volume	52 L	Without KO ¹ below -20°C	113 L/min	Without KO ¹ below -20°C	24 sec
Max. cyl. load (start tipping)	345 kN			Allowable lowering time	10 sec
Max. cyl. load (end of stroke) ²	197 kN				
Max. cyl. load (end of stroke) ³	230 kN				

Technical notes

- This cylinder is a lifting device only. • It should not be used as a structural member and should not be subjected to side loads. • Tipping valve must have a pressure relief at the cylinder port set not higher than max. working pressure. • Verify max. cyl. load. • Working temperature range is between -40°C and +80°C. • Max. duration of extension is 0.5 hours (excluded hard chromed stages). • Cylinder is painted black (RAL9005) with a min. thickness conforming to the 480 hours neutral salt spray test as per ISO 9227. • ¹ Hyva knock-off. • ² Unsubstantial unloading (sticky load). • ³ Substantial unloading.

Related documentation

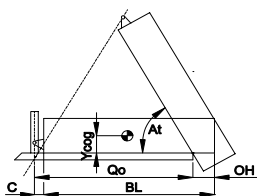
Bracket options:	015BRA10 & 015BRA12
Mounting instructions:	CYL-0030
Oil specifications:	OIL-0011
Spec sheet explanation:	CYL-0041

Configuration

Extension	1	2	3	4	5	6	7	Total
Effective diameter [mm]	137	118	99					4220
Stroke* [mm]	1390	1415	1415					

Tipping weight

For detailed tipping calculations please refer to: <https://tipper.hyva.com>

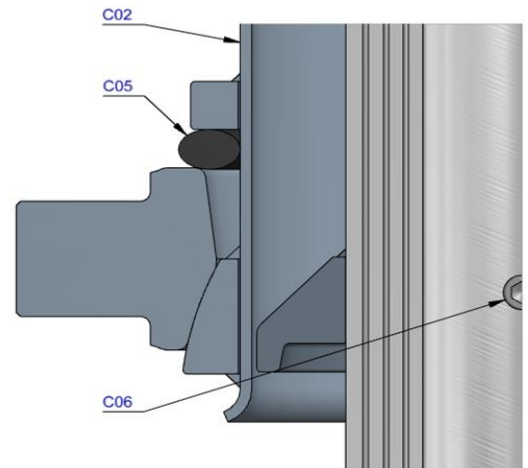
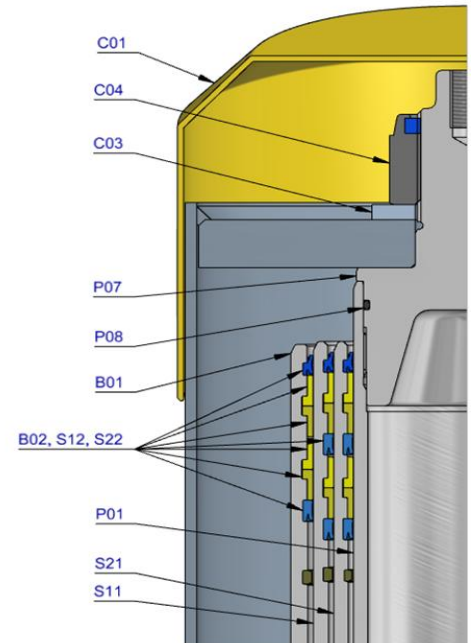


BL body length
OH rear overhang
Ycog vert. pos. centre of gravity
Qo pivot length
C bracket length
At tipping angle
 $stroke \times 60 / Qo$

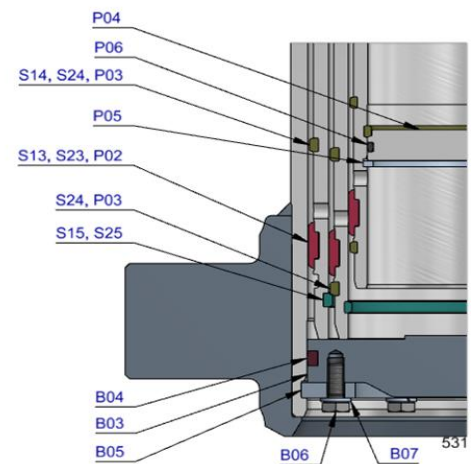
BL [mm]	5500	5350	5200						
OH [mm]	500	800	200	500	800	200			
At [°]	46	47	47	50	54	48			
Ycog [mm]	48	52	52	56	64	52			
600	54	60	70	55	62	72	56	64	76
900	58	67	80	60	69	84	61	72	90
1200	63	75		66	78		68		

Tipping weight [ton] at maximum pressure of 250 bar for a vertically mounted cylinder and C is 229 mm

Pos.	Part no.	Description	Qty.
C01	71839040	DUST COVER FC LOW 15-244	1
C02	71736201	COVER 242-0735 PIN60 A340 SPH LOCK	1
C03	01702956K	WASHER M48 DIN 125B ZP	1
C04	01702907K	TOPNUT NYLOC M48x3 DIN 985 ZP	1
C05	01791941	O-RING COVER D.242	1
C06	15014550K	BOLT HSHC M12X30X1.75 Q8.8 DIN 912 ZP	1
P01	70443641	PISTON MN3 S 099-1645-HD-HC	1
P02	70207099K	SLIDER MN 099 (2 x 1/2) A35	1
P03	70216099K	OUTER STOPRING MN 099 A22	2
P04	70230099	BOTTOM PLATE PISTON MN 099 MK2 HD	1
P05	01745042K	CIRCLIP 85 DIN 472 (90.5x3.0)	1
P06	70260215K	O-RING PISTON BOTTOM 099	1
P07	70232400	PISTON HEAD MN3 099	1
P08	70260115K	O-RING 82.14 X 3.53 MM	1



S21	70674641	STAGE MN2 118-1640-HD-HC	1
S22	70202118K	PACKSET MN 118 TANDEM SEAL	1
S23	70207118K	SLIDER MN 118 (2 x 1/2) A35	1
S24	70216118K	OUTER STOPRING MN 118 A22	2
S25	70217118K	LIFTRING MN 118 A22	1
S11	70675641	STAGE MN2 137-1640-HD-HC	1
S12	70202137K	PACKSET MN 137 TANDEM SEAL	1
S13	70207137K	SLIDER MN 137 A35	1
S14	70216137K	OUTER STOPRING MN 137 A22	1
S15	70217137K	LIFTRING MN 137 A22	1
B01	70376650R0635	BASE MN2 157-1679-4/4BSAE-190-C242-HD	1
B02	70203157K	PACKSET MN 157	1
B03	70225355	BOTTOM PLATE MN2 157	1
B04	70270157K	SEAL BOTTOM PLATE MN 157	1
B05	70220157	LOCKING PLATE MN 157	3
B06	01732055K	BOLT HEX M8X20X1.25 SET 6 PCS	1
B07	01732559K	WASHER SPRING M8 SET 6 PCS	1



Seal kit complete

71907531K	Consists of all packsets with packset grease and O-rings
-----------	--

Notes

The inner stopring and piston bottom are pre-mounted on spare bases, stage and pistons. Therefore, when ordering new tubes, it is not required to order these parts separately.

For repair instructions see: CYL-0040. Serial no. is located on type plate and near type plate support.