

Specifications

Type		25L	41L	51L	61L	81L	101L	
Part number (Right rotation)		14535160	14535170	14535180	14535190	14535200	14535210	
Part number (Left rotation)		14535155	14535165	14535175	14535185	14535195	14535205	
Displacement		25.6	40.9	51.1	59.5	81.6	102.9	cc/rev
Shaft dimension DIN 5462		8*32*36	8*32*36	8*32*36	8*32*36	8*32*36	8*32*36	mm
Inlet Ports ("I")		Suction fitting to be ordered separately						
Outlet Ports ("G")		3/4"	3/4"	3/4"	3/4"	1"	1"	BSP
Recommended suction hose diameter		1 1/2"	2"	2"	2"	2 1/2"	2 1/2"	inch
Max. Continuous pressure "P3"		350	350	350	350	350	350	bar
Max. Peak pressure "P1"		400	400	400	400	400	400	bar
Mass		8.5	8.5	8.5	8.5	12.5	12.5	kg
Overhang torque		7.4	7.4	7.4	7.4	15.2	15.2	Nm
"A"		261	261	261	261	314	314	mm
"B"		169	169	169	169	220	220	mm
"C"		96	96	96	96	108	108	mm
"D"		131	131	131	131	144	144	mm
"E"		73	73	73	73	112	112	mm
"F"		104	104	104	104	114	114	mm
"H"		48	48	48	48	53	53	mm
Max. Torque		163	260	324	378	518	653	Nm
Max. power		45	61	73	83	105	126	kW
Max. Torque at "P3"		142	227	284	331	453	572	Nm
Max. Flow		78	104	125	143	180	216	l/min
Max. speed*		3050	2550	2450	2400	2200	2100	rpm
Oil temperature range	min / max	-30 / 75	-30 / 75	-30 / 75	-30 / 75	-30 / 75	-30 / 75	°C
Recommended oil viscosity	min / max	20 / 30	20 / 30	20 / 30	20 / 30	20 / 30	20 / 30	cSt
Operating viscosity	min / max	10 / 400	10 / 400	10 / 400	10 / 400	10 / 400	10 / 400	cSt
Max. starting viscosity**		1000	1000	1000	1000	1000	1000	cSt
Recommended filtration - ISO (201813)		10	10	10	10	10	10	µm
Leak indicator included with the pump		Yes	Yes	Yes	Yes	Yes	Yes	

*Max speed can only be used if correct suction line dimensions are used.

Note : The pump does not include suction fitting. Please refer page 3.

**Max speed is 1200 RPM at a viscosity of 1000cSt.

Peak pressure max. 5 sec/min.

Technical Notes

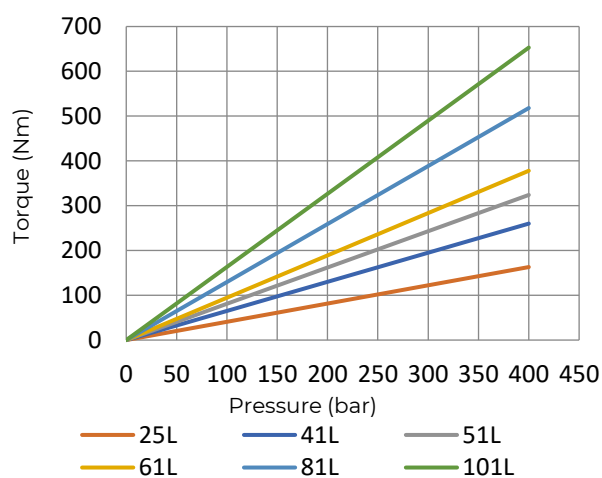
• Recommended oil is mineral based • For other fluids contact our engineering department • To avoid cavitation, suction hose must be kept as short and straight as possible and oil viscosity should be respected at all operating temperatures. • The minimum oil level in the oil tank must be above the inlet of the pump. • Follow proper mounting instructions for prolonged bearing life. • If any oil should drop out the indication-hole stop the system immediately.

Related documentation

Mounting instructions: PUM-0030

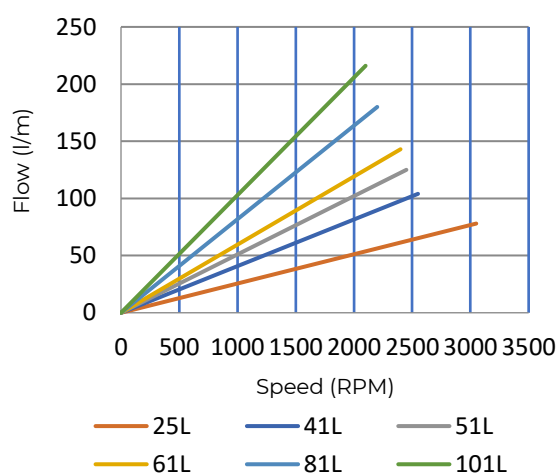
Oil specifications : Oil-0011

Torque - Pressure characteristics

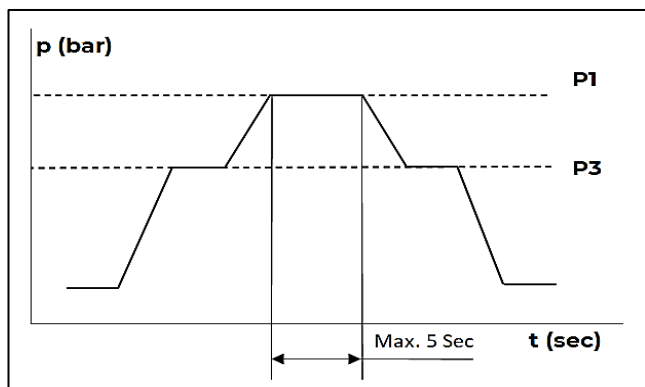


* PTO output torque must be higher than the torque required by the pump.

Flow - Speed characteristics



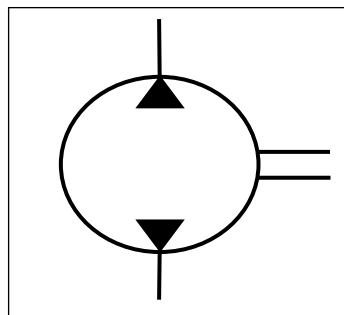
Pressure definition



p 1) Peak pressure

p 3) Continuous Pressure

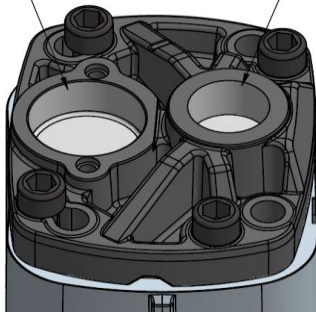
Hydraulic symbol



Mounting Options

SUCTION PORT

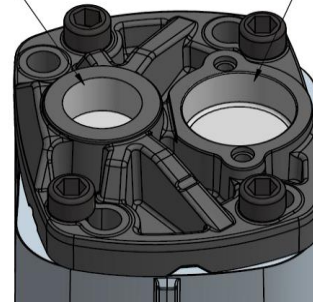
PRESSURE PORT



LEFT HAND ROTATION

PRESSURE PORT

SUCTION PORT



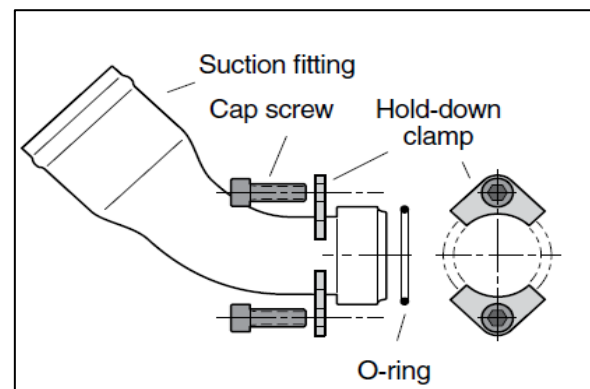
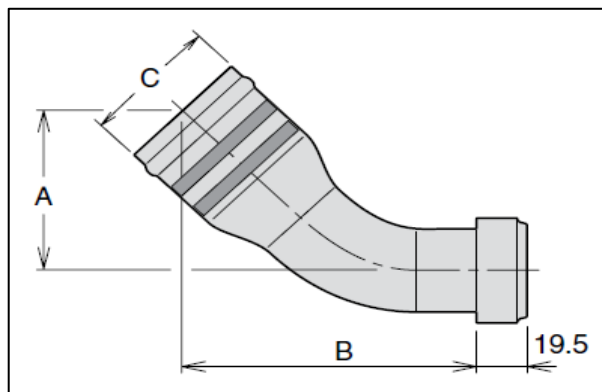
RIGHT HAND ROTATION

Note : To change rotation, refer installation manual.

Accessories

Part no.	Description
14535380	BYPASS VALVE F1 (25L-61L) - 24VDC
14535381	BYPASS VALVE F1 (25-61L) - 12V
14535385	BYPASS VALVE F1 (81L-101L) - 24VDC
14535379	BYPASS VALVE F1 (81L-101L) - 12VDC

Suction fitting



Note : Suction fitting must be ordered separately as it is not included with pump.

The clamps, O-ring and the screw are included with the fitting.

Part no.	A mm	B mm	ØC mm (in)
14535304	60	104	38 (1 1/2")
14535300	67	110	45 (1 3/4")
14535305	67	110	50 (2")
14535306	75	117	63 (2 1/2")

Note : We advise on using large hose diameter.

Spare parts

No.	Description	25-121 cc
01	Seal kit	14534343