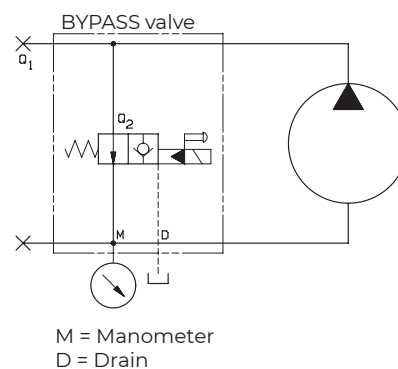


## Specifications

For pumps	14569029 / 14569030 14569008 / 14569009 14569010 / 14569015 14569020 / 14569025
Type	<b>02412005</b>
Coil Volt	24V
Max pressure	400 bar* / 5801.5 psi
Enclosure	IP 66
Coil power	24 W
Max flow	60 lt/min
Drain port size	3/8" BSP / 0.375 inch
Working temperature range	-20 / 40°C
Weight	3,2 kg

\*See pumps catalogue for related pressure values.

## Hydraulic scheme



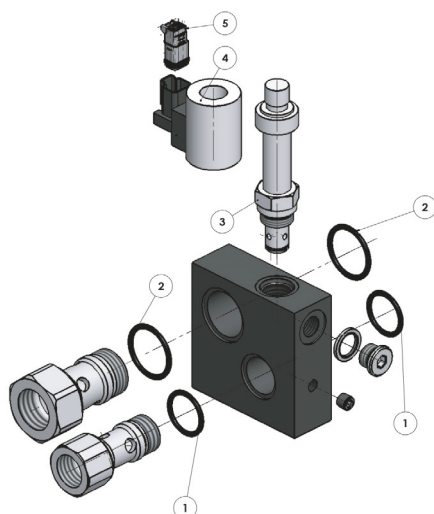
## Technical notes

• The bypass valve is used together with HDS bent axis piston pumps if the pump turns constantly when the vehicle is on (in installations with the power takeoff without a coupling or coupled directly to the motor) • In such cases, all the oil flow delivered is circulated, at the maximum pump capacity permitted by the turning speed of the motor, through piping that is usually not sized for capacities greater than those required for the normal use of the pump, consequently giving rise to pointless energy losses and overheating in the system • The bypass valve serves the purpose of partially recirculating the pump's oil flow Q (see diagram 1) inside the pump so that a flow Q1 (corresponding to the difference between the total flow Q and the recycled flow Q2) circulates through the system's piping • The proportion of total capacity distributed to the flows Q1 and Q2 depends on the system load losses and the bypass valve. In any case, it is essential to guarantee an oil flow Q1 of at least 5-10 l/min to ensure adequate pump cooling.

## Related documentation

Mounting instructions: OH-E PUM-0032

## Spare parts



N°	Part.no	Description	Qty.
1	14552696	Seal kit	2
2			2
3	14552697	Cartridge 7/8-14	1
4	14552708	Coil by pass valve 24V	1
5	14552687	Deutsch female connector	1

## Accessories

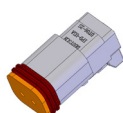
Part no.	Description
021417105	Electric kit
14552687	2-Pole female connector DEUTSCH

**021417105**

L= 6000mm



**14552687**



## Mounting positions

