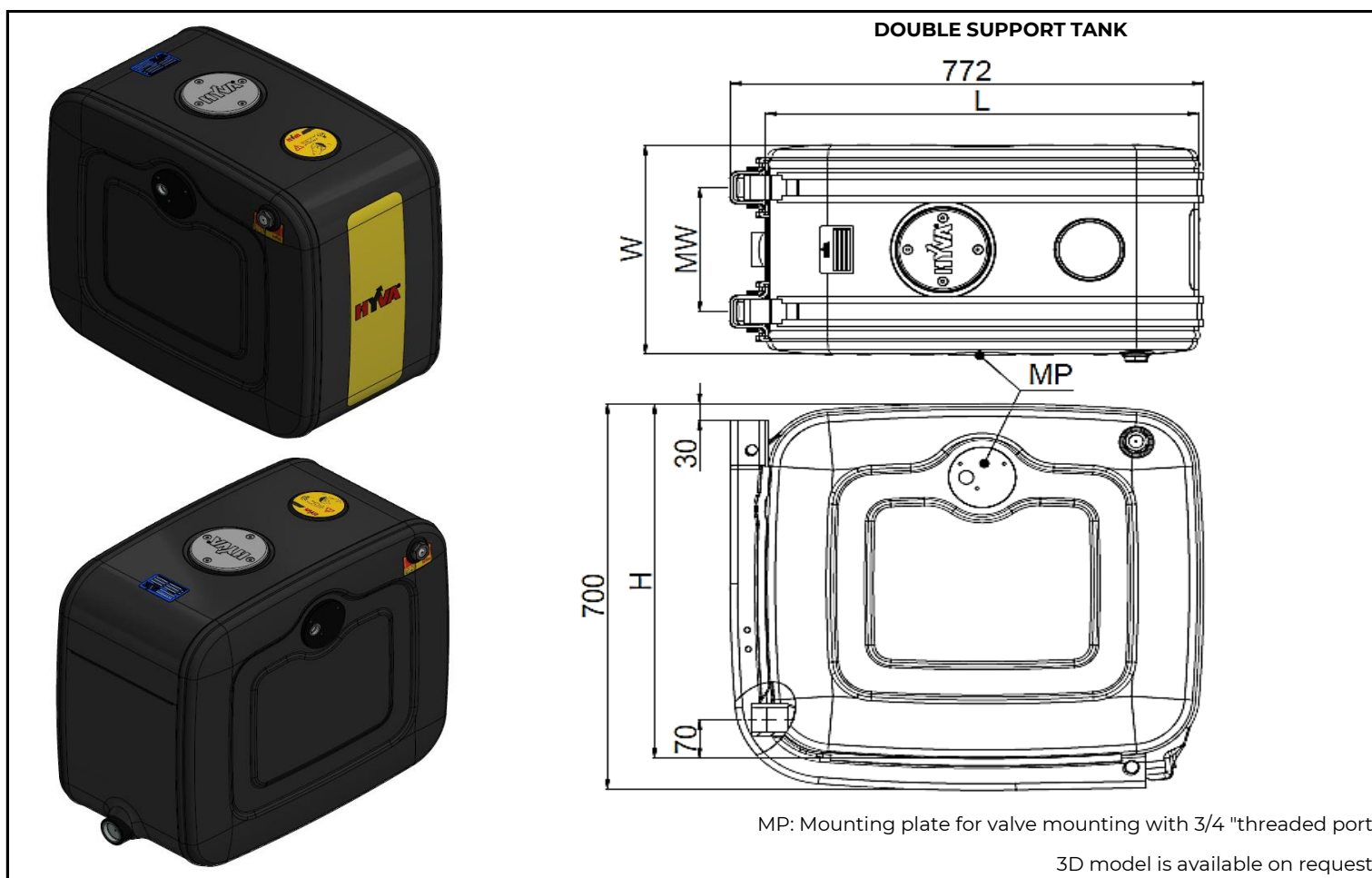


**Alpha standard**



## Specifications

Support configuration	Double support				
Part number*	14017254	14017258	14017262	14017266	
Support with rubber, strap with rubber, mounting kit & air breather included	14020160 - 1 pre-drilled hole				1H
	14020161 - 3 pre-drilled holes				3H
L : Length of tank	706	706	706	706	mm
H : Height of tank	636	636	636	636	mm
W : Width of tank	380	440	495	580	mm
MW : Mounting Width min / max	195 / 225	200 / 275	220 / 330	250 / 415	mm
Material	Steel	Steel	Steel	Steel	
Gross volume	155	179	201	236	litres
Working volume	130	150	169	200	litres
Tank body weight	36.4	36	38.1	41.3	kg
A : Suction port**	1.5"	1.5"	1.5"	1.5"	BSP

The mounting plate (MP) port is closed with a temporary plastic plug.

\*Part number with : tank body + spy eye + return line filter cover.

\*\*Suction port A is closed with a temporary plug.

## Technical notes

• Mount the tank according the mounting instructions • Fill the tank with the recommended hydraulic oil to the centre of the level indicator • Change the oil once a year • Replace the air breather and return filter element twice a year • Do not use the tank to stand on or as a support • Do not weld on the oil tank

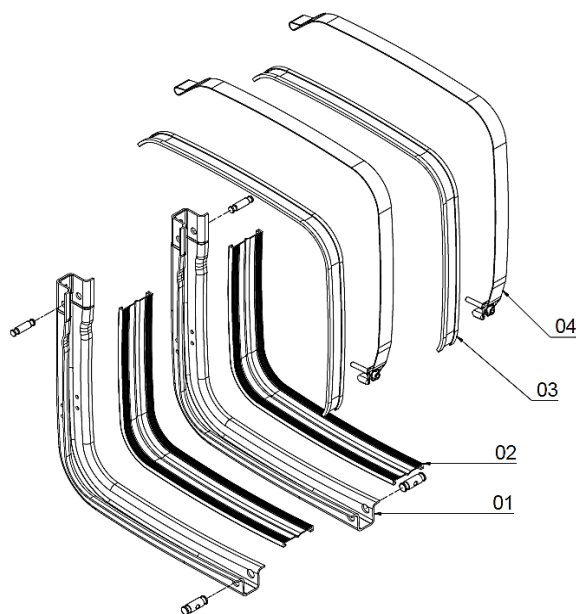
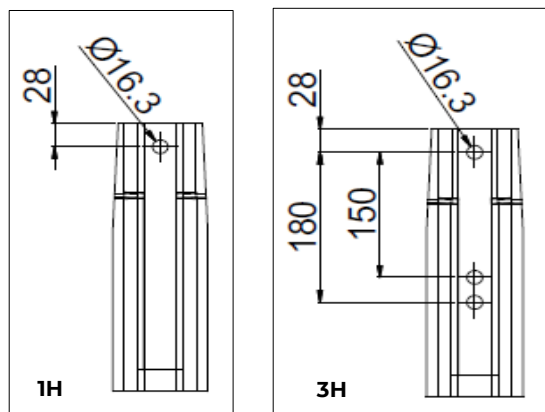
## Related documentation

Mounting instructions: OIL-0014

Oil specifications: OIL-0011

## Supports, straps, rubbers & mounting kits

Detail support with one hole and support with three holes



### Double support

#### Full kits

Part no.	Description	Weight [kg]
14020160	Full kit for support 1H: with one pre-drilled hole**	32.8
14020161	Full kit for support 3H: with three pre-drilled holes**	32.2

\*\*Full kit = 2 x support with rubber, strap with rubber, mounting kit & air breather included.

#### Separate support parts

No.	Part no.	Description	Weight [kg]
01 & 02	14020320	Support with one hole incl. rubber	8.7
01 & 02	14020321	Support with three holes incl. rubber	8.7
02	14020435	Rubber for support	0.4
03 & 04	14020308	Strap with rubber	1.4
03	14020425	Rubber for strap	0.2
n/a	14020327	Mounting kit double support tank: - pin bottom (2x) - pin top (2x) - bolt M12 for strap (2x) - square washer M12 for strap (2x) - rectangular washer (4x)	

### Air Breather



No.	Part no.	Description	Weight [kg]
05	08102116	Air breather	0.4

Attention! : Air breathers are included with support kit, not included with tank.

For Air breather spec sheet, see DO-E 08102116.

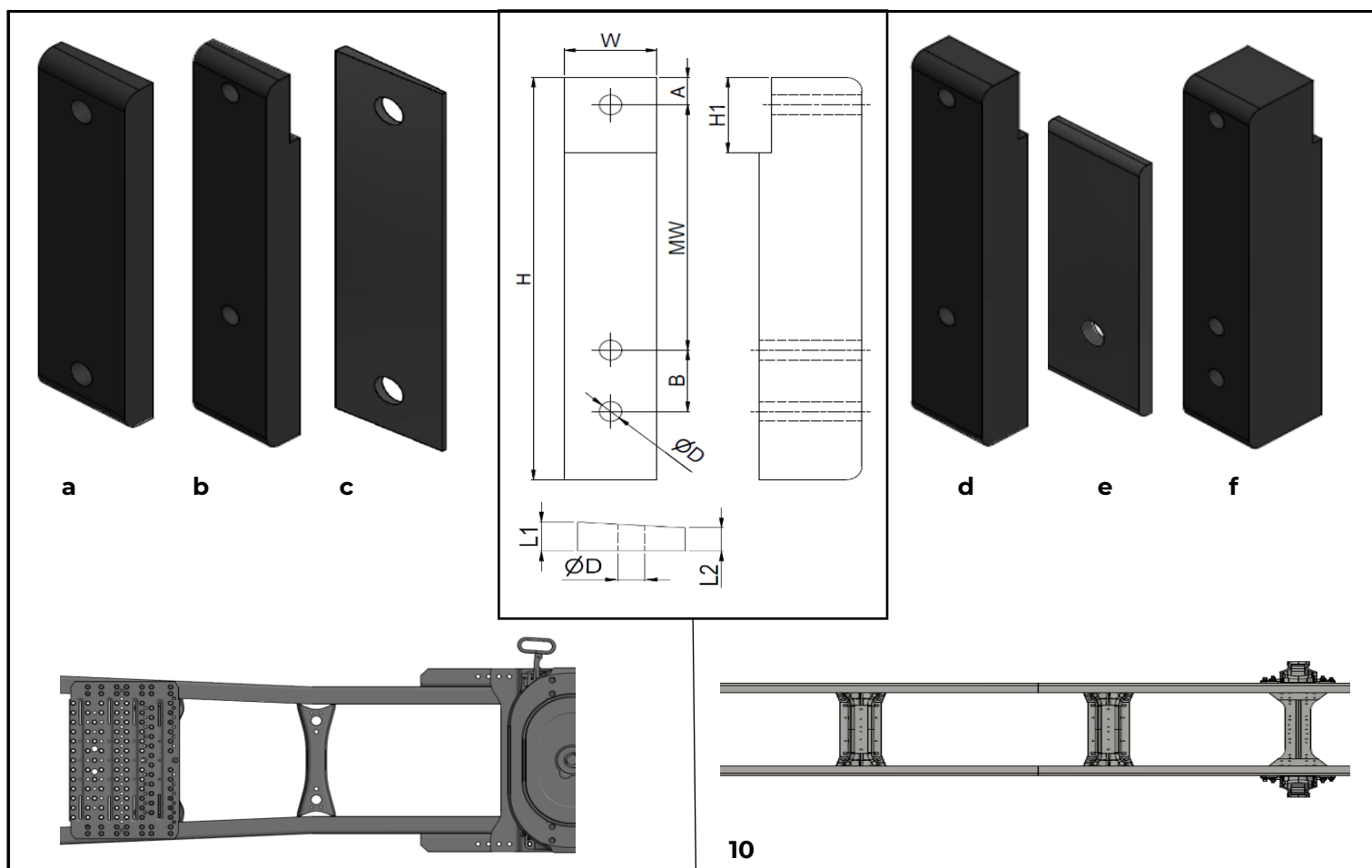
## Accessories



No.	Part no.	Description	Weight [kg]
06	08102121*	Plastic spy eye 1" BSP (with gasket)*	0.041
07	14780981**	Ball valve 1 1/2" BSP**	1.2
08	14020509	Strengthening ring SM tank RF kit	0.3
09	08102104	Cover Plate	0.09

\*Attention! : Spy eye included in the Tank body.

\*\*For more suction component see LPADAP01.



No.	Part number	Description	TYPE OF CHASSIS	H mm	W mm	L1 mm	L2 mm	ØD mm	H1 mm	MW mm	A mm	B mm
10		Spacer - (Option)	-	-	-	-	-	-	-	-	-	-
a	01040005	Spacer for MERCEDES CHASSIS ANGLE	TAPERED	230	60	20	16	15	-	180	25	-
b	01040003	Spacer for MAN FIFTHWH	TAPERED	295	60	27	19	14.5	55	180	20	-
c	01040006	Spacer for MERCEDES CHASSIS ANGLE	TAPERED	230	60	06	02	16.3	-	180	25	-
d	01040002	Spacer for MAN FIFTHWH	STRAIGHT	295	60	40	40	14.5	55	180	20	-
e	01040004	Spacer for CHASSIS FIFTHWH	STRAIGHT	160	60	08	08	15	-	-	120	-
f	01040007	Spacer for IVECO	STRAIGHT	295	60	67	67	14.5	55	180	20	45

## Return filters



11



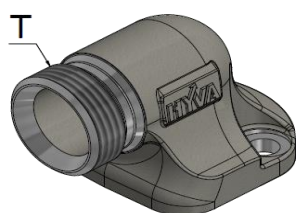
12

No.	Part no.	Description	Weight [kg]
11	14780352	Return filter housing type 250 L/m*	2.4
12	14895924	Return filter plate type 250 L/m*	2.1

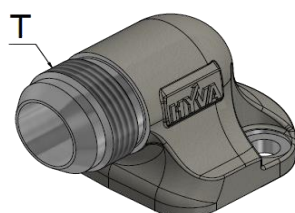
Attention! : Return line filters are not in the mounting kit. To be ordered separately.

For Return line filter spec. sheet, see RFILTE02.

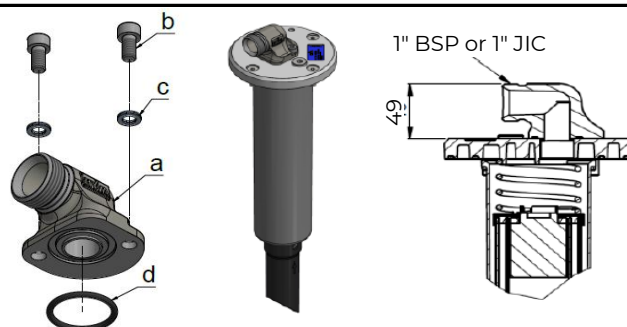
## Option adaptor for plate filter



13



14

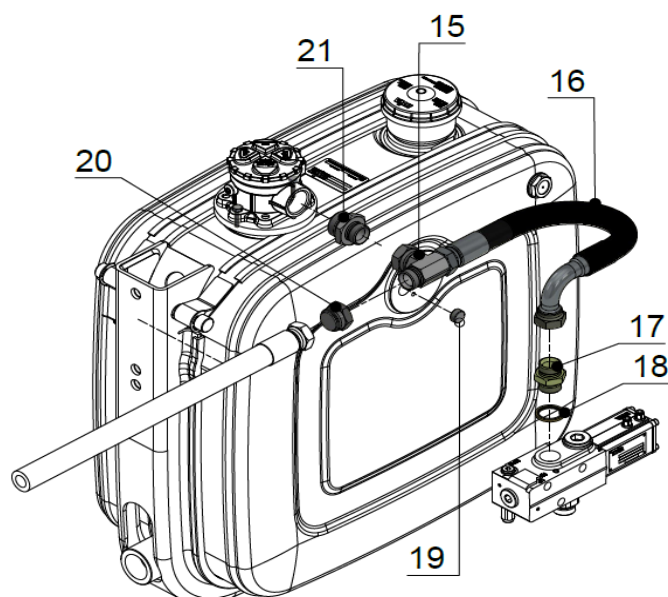


No.	Part no.	Description	Thread size (T)	Qty
13	01317987	Adaptor kit 90 for return filter	1" BSPOTC	1
14	01317988	Adaptor kit 90 for return filter	1" JICOTC	1

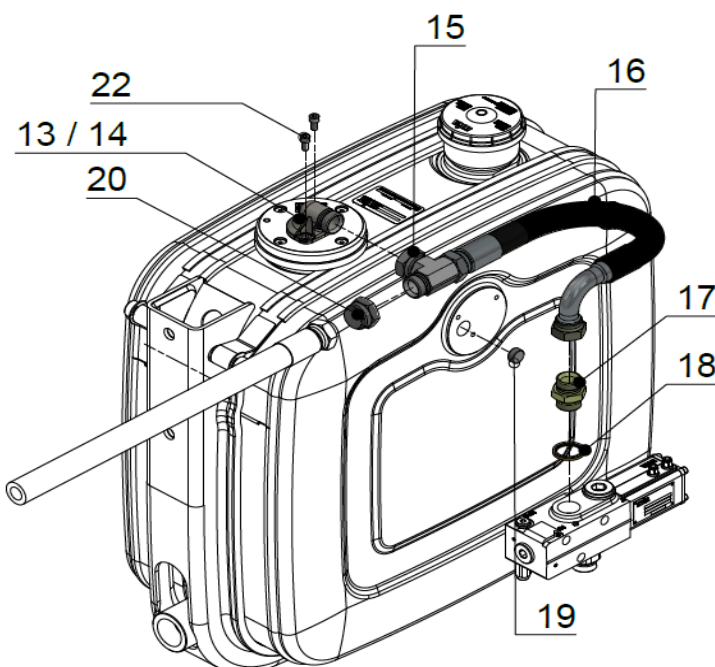
No.	Description	Qty
a	Adaptor-90-elbow-1" BSPOTC	1
	Adaptor-90-elbow-1" JICOTC	
b	Bolt HSHC M8x16x1.25 DIN 912 ZP	2
c	Nord-lock washer M8	2
d	O-Ring 34.60x2.62	1

Note : O-rings, bolts & washers are included with adapter.

## Side mounted valve



**SIDE MOUNTED VALVE  
HOUSING VERSION**



**SIDE MOUNTED VALVE  
PLATE VERSION**

## Full kit

No.	Part no.	Description	Weight [kg]
-	32050351	Full Adapter kit for Side mounted valve*	-

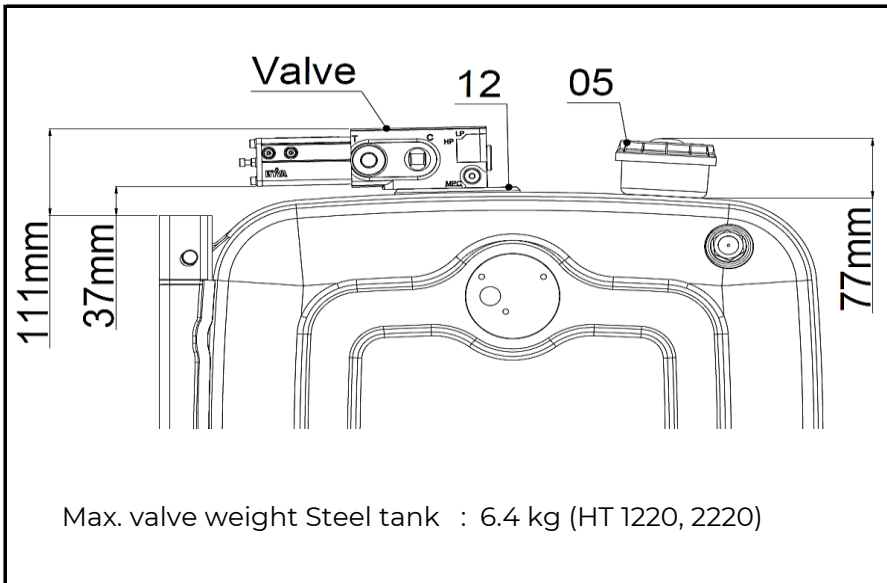
Note: Full kit contains all parts in the table (Nr. 13 & 15-20)

For installation of this kit, see HOS-0002

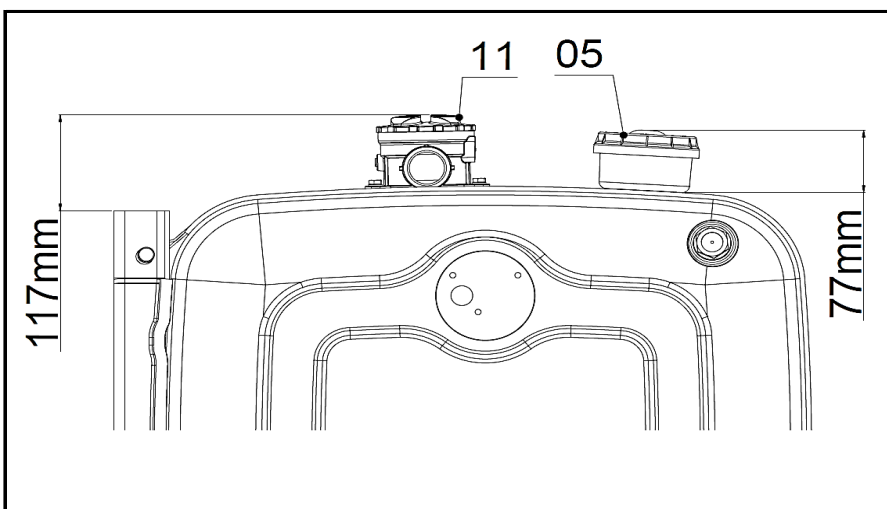
## Separate parts

No.	Part no.	Description	Weight [kg]
15	01318195	Adaptor HP-T-SW-1" BSPIT-BSPOT-BSPOT	0.63
16	14794952	Return hose 1-HP-16-00550-00-90 88 bar + spiral	2.85
17	01317933	Adaptor HP 00 1" BSPTC x 1" BSPOTC	0.22
18	01313848	Bonded seal 1"	0.02
19	14799175	1/2" BSPOT-Allen plug DIN906	0.02
20	14799193	Adaptor HP-00-1" BSPIT-End cap	0.19
21	01222107	ADAPTOR HP-00-1" BSPOTC x 1 1/4" BSPOTC	0.28
22	15013640	Bolt HSHC M8x16x1.25 DIN 912 ZP	0.01

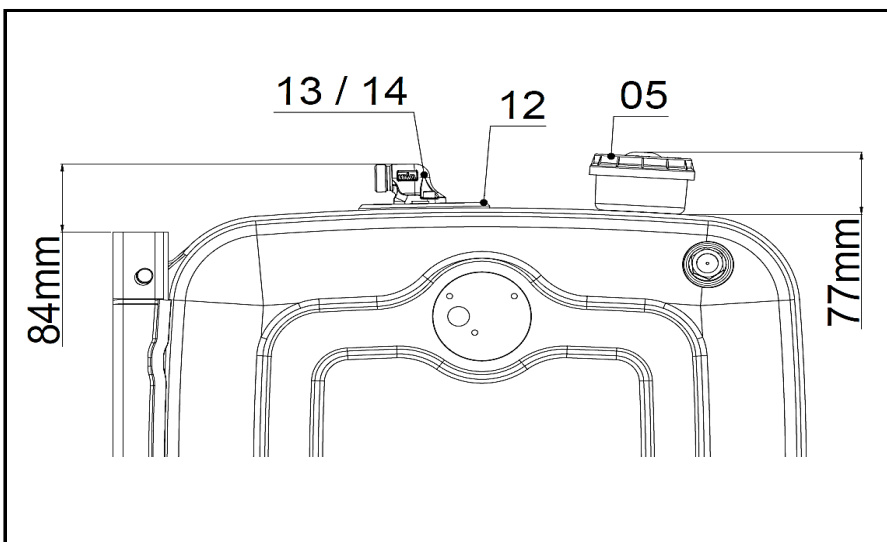
## Valve mounting options



**Valve mounted on top of tank**



**Valve mounted on chassis or cylinder (SAE)**



**Valve mounted on chassis or cylinder with Return line Plate version**