

# HYVA PISTON PUMPS



BENT AXIS TYPE

Hyva

piston pump type :

piston pump 130L-RH-4H-BA

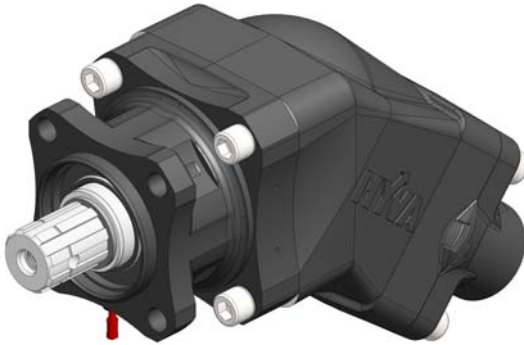
part number :

145 69 223

Page 1 / 2

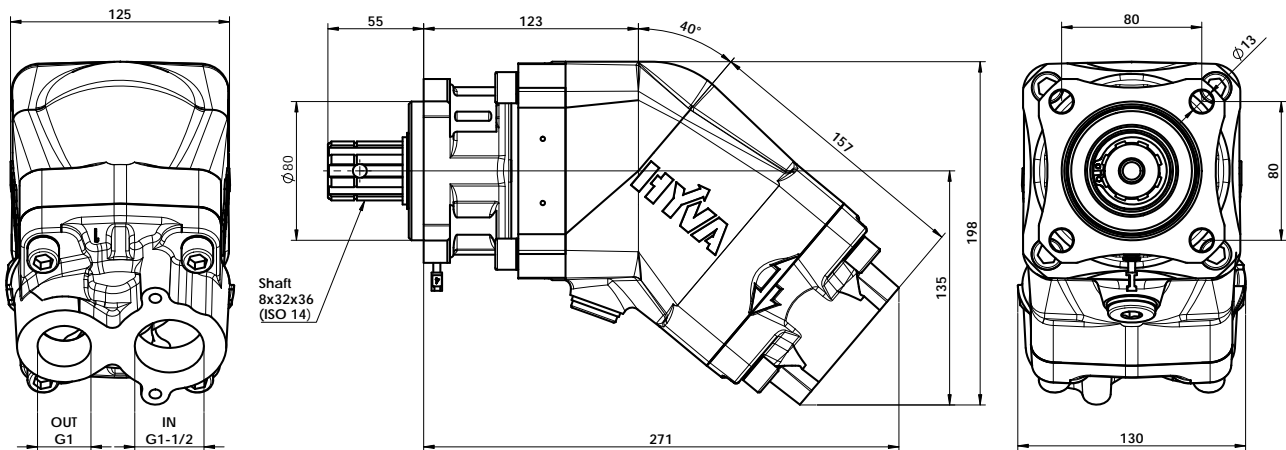
rotation :

clock wise seen from front side of pump



|  |   |                     |                                      |               |      |
|--|---|---------------------|--------------------------------------|---------------|------|
| Fluid  | Mineral or synthetic compatible with the following seals:<br>HNBR |                     |                                      |               |      |
| Kinematic viscosity suggested  | Average ambient temp. (°C)  | < -40               | -40+10                               | 10+35         | > 35 |
|  | VG (cSt = mm²/s)  | 16                  | 22                                   | 32            | 46   |
| Optimale kinematic viscosity   |   |                     | VG= 10 cSt + 100 cSt                 |               |      |
| Max kinematic viscosity suggested at the start-up  |   |                     | VG= 750 cSt                          |               |      |
| Viscosity index suggested  | VI > 100  | Working temperature |                                      | -40°C + 140°C |      |
| Oil filtering  |   |                     | > 200 bar: 10 µm<br>< 200 bar: 25 µm |               |      |
| Inlet pressure   |   |                     | 0,85 ± 2 bar absolut                 |               |      |
| Pump rotation  |   |                     | Right                                |               |      |
| Verify that pump is, at least, 100 mm under the minimum level of the tank. Before starting the pump bleed the air. |   |                     |                                      |               |      |

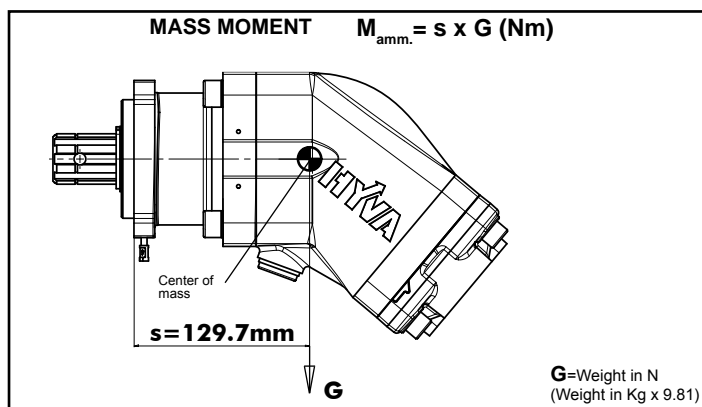
## Dimensions in mm



| DISPLACEMENT   | PRESSURE |         | SPEED    |          |          | MIN. SPEED | IN ISO 228 | OUT ISO 228 | WEIGHT  |
|----------------|----------|---------|----------|----------|----------|------------|------------|-------------|---------|
|                | P1       | P3      | V1       | V2       | V3       |            |            |             |         |
| 131,62 cm³/rev | 250 bar  | 270 bar | 2300 rpm | 1500 rpm | 2000 rpm | 300 rpm    | G 1-1/2    | G 1         | 18,2 Kg |

P1 = Max. continuous pressure (100%)  
P3 = Max. peak pressure (6 sec.max)

V1 = Max. continuous speed without load  
V2 = Max. continuous speed  
V3 = Max. intermittent speed



**WARNING:** if oil leaks through the transparent tube the pump should be replaced immediately to avoid gearbox damage.

## SEAL KIT

Part.no **02410022**

# HYVA PISTON PUMPS



BENT AXIS TYPE

Hyva

piston pump type :

piston pump 130L-RH-4H-BA

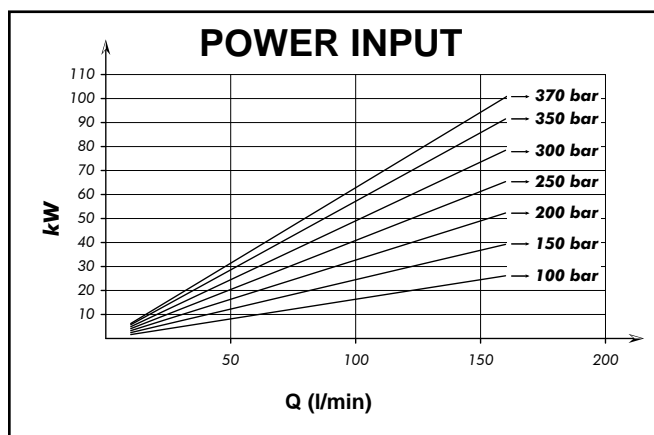
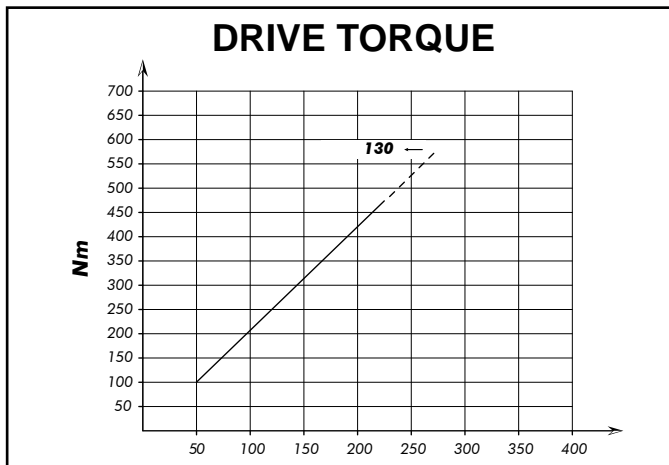
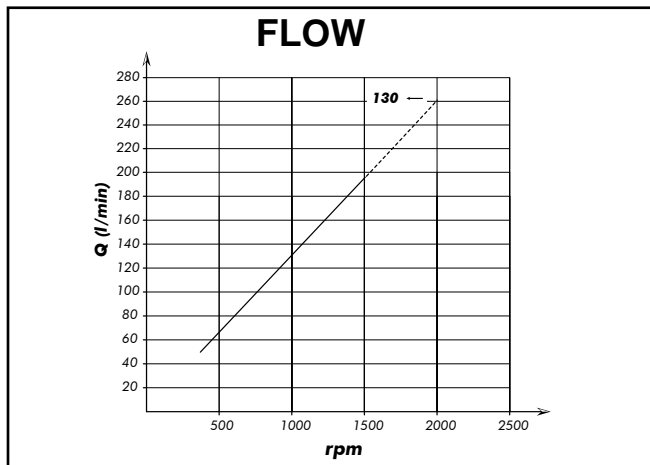
part number :

145 69 223

Page 2 / 2

rotation :

clock wise seen from front side of pump



| suction hose | LP 20    | LP 24    | LP 28    | LP 32    |
|--------------|----------|----------|----------|----------|
| flow [lpm]   | 60       | 60-85    | 60-120   | 120-150  |
| pump size    | max. rpm | max. rpm | max. rpm | max. rpm |
| 25           | 2300     |          |          |          |
| 34           | 1700     | 2400     |          |          |
| 40           | 1400     | 2100     |          |          |
| 47           |          | 1700     | 2400     |          |
| 64           |          | 1300     | 1700     | 2300     |
| 80           |          |          | 1400     | 1800     |
| 84           |          |          | 1300     | 1700     |
| 96           |          |          |          | 1500     |
| 108          |          |          |          | 1400     |
| 130          |          |          |          | 1100     |