

For mounting on
 • Hyva tank mounting plate

3D model is available on request

- 1 Pump connection (P)
- 2A Return tank connection (T)
- 2B Alternative return tank connection (T)
- 3 Cylinder connection (C)
- 4 Pneumatic connection (Tip)
- 5 Pneumatic connection (Lower)
- 6 Pressure gauge point
- 7A High pressure cartridge (Max 2)
- 7B Low pressure cartridge (Max 1)
- 8 Pressure Selector
- 9 Adjustment screw (To adjust the lowering speed)

Types

Hydraulic connections	Pressure (BAR)		Part Number	Description
	Max. 1*	Max. 2*		
T, C & P=1"	150	220	14767152	TIP VALVE HT-TNK-2220-150-220-P1"
		250	14767155	TIP VALVE HT-TNK-2220-150-250-P1"
		280	14767158	TIP VALVE HT-TNK-2220-150-280-P1"
		350	14767165	TIP VALVE HT-TNK-2220-150-350-P1"
	170	220	14767172	TIP VALVE HT-TNK-2220-170-220-P1"
		250	14767175	TIP VALVE HT-TNK-2220-170-250-P1"
		280	14767178	TIP VALVE HT-TNK-2220-170-280-P1"
		350	14767185	TIP VALVE HT-TNK-2220-170-350-P1"
	190	220	14767192	TIP VALVE HT-TNK-2220-190-220-P1"
		250	14767195	TIP VALVE HT-TNK-2220-190-250-P1"
		280	14767198	TIP VALVE HT-TNK-2220-190-280-P1"
		350	14767200	TIP VALVE HT-TNK-2220-190-350-P1"

Optional adapter kits	Kit number
1" Straight TNK mounting	AK5016TS
1" 90 degree TNK mounting	AK5016TE
1" Straight CHASSIS mounting	AK5016CS
1" 90 degree CHASSIS mount.	AK5016CE

Mounting kits	Kit number
Tank (TNK) **	14735168
Chassis	14735208

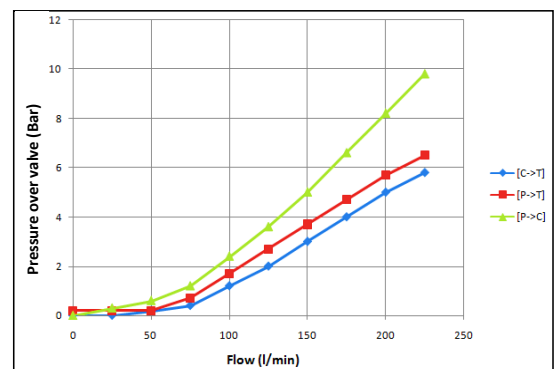
** = included with valve

* = The user can choose the maximum pressure limit by using the Pressure Selector (8)

Specifications

Type	Spool valve with pressureless bypass in neutral. Oil flow in lowering position is proportional with pneumatic pilot pressure	
Max. peak pressure	350 bar	
Pneumatic pilot pressure	6-12 bar	
Max. pump flow	220 L/min	
Max. pressure on T-connection	10 bar	
Min. filtration (ISO 18/13)	25 µm	
Viscosity range	min	12 mm ² /s (cst)
	max	100 mm ² /s (cst)
Temperature range	min	-40 °C
	max	80 °C
Mass	6,4 kg	

Δp - Q characteristic



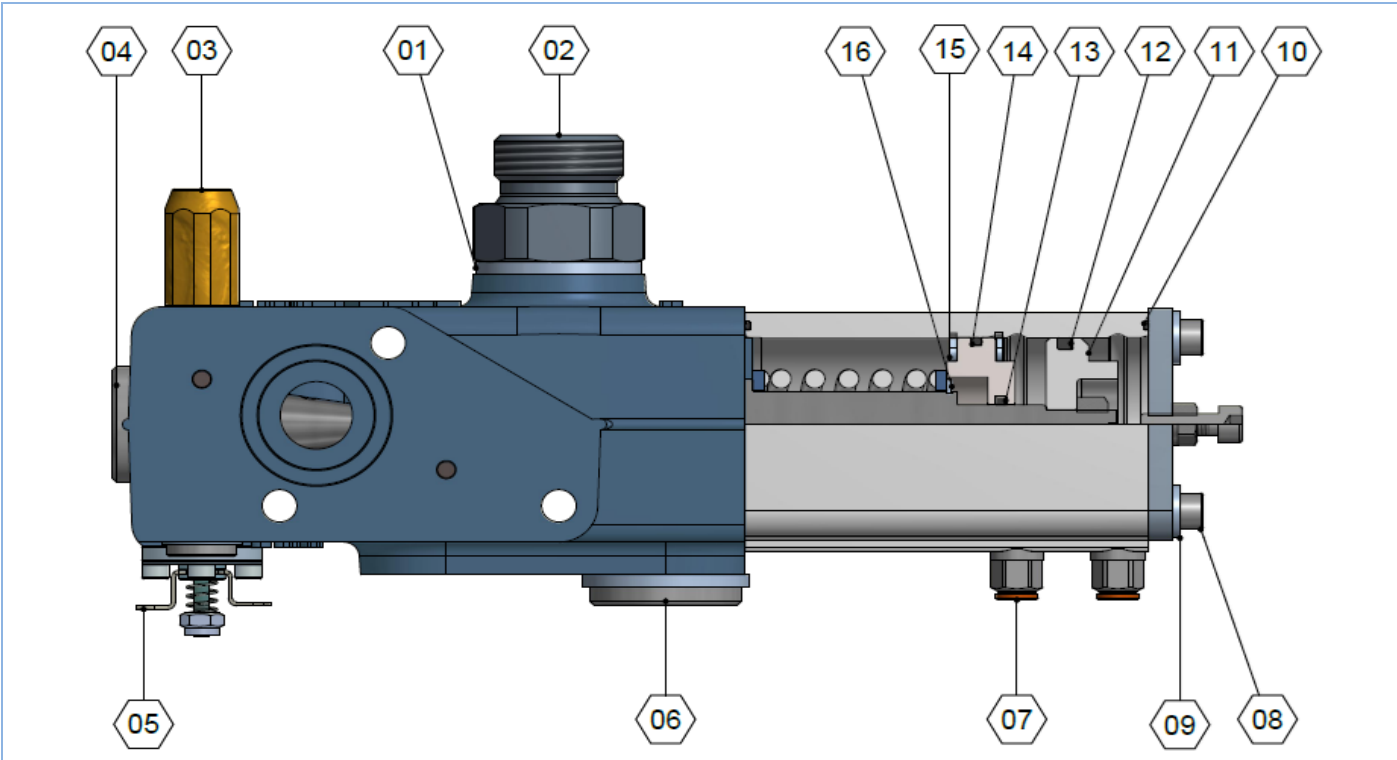
Technical notes

- Mount the valve according the mounting instructions • Use the correct washers and adapters in the ports to prevent housing deformation. Do not use adapters with tapered threads • To further prevent deformation of the valve housing, the mounting plate surface or block must be completely flat and plane. • Do not weld to the valve. • Ideal air pressure for valve is 8 bar. • Make sure inlet air is dry.
- Paint spec: TNO00_00001

Related documentation

Mounting instructions: VAL-0022

OIL Specifications: OIL:0011

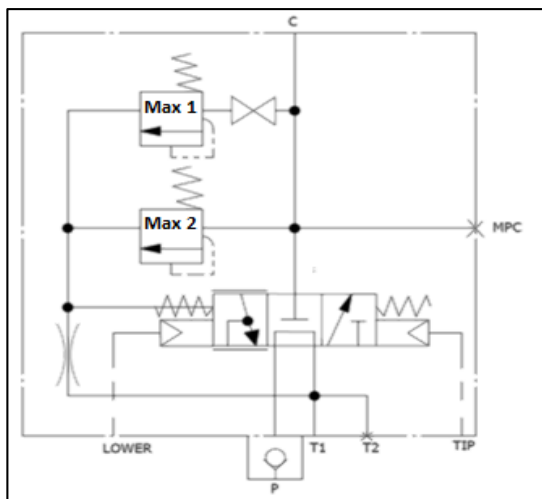


Spare Parts

No.	Part no.	Description	Qty
1	01313848	Bonded Seal	2
2	14739975A	Non return valve	1
3	14772...	Pressure cartridge	2
3	14772150	150 bar	
3	14772170	170 bar	
3	14772190	190 bar	
3	14772220	220 bar	
3	14772250	250 bar	
3	14772280	280 bar	
3	14772350	350 bar	
4	14845024	Blind Plug	1
5	14845050	PR. Adj. KIT	1

No.	Part no.	Description	Qty
6	14845040	Bling Plug	1
7	14810517	Straight coupling	2
8	15013638	Bolt	4
9	15022015	Washer	4
10	01226200	O-ring	2
11	14845007	Piston air cylinder	1
12	14845020	Quading	1
13	14845018	Quading	1
14	14845013	O-ring	1
15	14845019	Retaining ring	2
16	14845031	Retaining ring	3

Hydraulic symbol of the HT valve



Max 1 = the pressure cartridge with the lowest BAR value

Max 2 = the pressure cartridge with the highest BAR value