

HYVA CYLINDER

714 36 709



type: UME 169-5-2480-K221-50-3/4"-HC

tipping weight: 21-32 ton

page # 1 / 1

Stage diameters 169 149 129 110 91	front view cylinder		<table border="1"> <tr><td>A</td><td>230</td></tr> <tr><td>ØC</td><td>192</td></tr> <tr><td>G¹</td><td>732</td></tr> <tr><td>I</td><td>481</td></tr> <tr><td>K¹</td><td>221</td></tr> <tr><td>H¹</td><td>62</td></tr> <tr><td>N</td><td>30</td></tr> <tr><td>ØP</td><td>88</td></tr> <tr><td>ØY</td><td>35.5</td></tr> <tr><td>S</td><td>490</td></tr> <tr><td>ØW</td><td>50</td></tr> <tr><td>X</td><td>45</td></tr> </table>	A	230	ØC	192	G¹	732	I	481	K¹	221	H¹	62	N	30	ØP	88	ØY	35.5	S	490	ØW	50	X	45
A	230																										
ØC	192																										
G¹	732																										
I	481																										
K¹	221																										
H¹	62																										
N	30																										
ØP	88																										
ØY	35.5																										
S	490																										
ØW	50																										
X	45																										

¹including 20 mm pull-out [tol. -5; +30 mm]

specifications

total stroke ¹	2480 mm
dry weight cylinder only	113 kg
total volume	37.0 L
working volume	34.2 L
maximum pressure	220 bar
maximum pump flow	98 l/min
maximum allowable thrust first stage ³	25.0 ton
oil inlet	3/4" BSP

technical notes

This cylinder is a lifting device only and may not be used as a structural member or be subjected to side load. Side load and/or poor alignment might result in cylinder leakage. Hyva therefore strongly recommends the use of a cradle, even in instances where the cylinder only tips to the rear or to the side. The cylinder is painted black RAL9005. For suitable hydraulic oils, please refer to data sheet OIL-0002. For details of available brackets and cradles, please refer to data sheet 015BRA06.

Detailed calculations can be made using the HYVA Tipper Program, freely available from www.hyva.com.

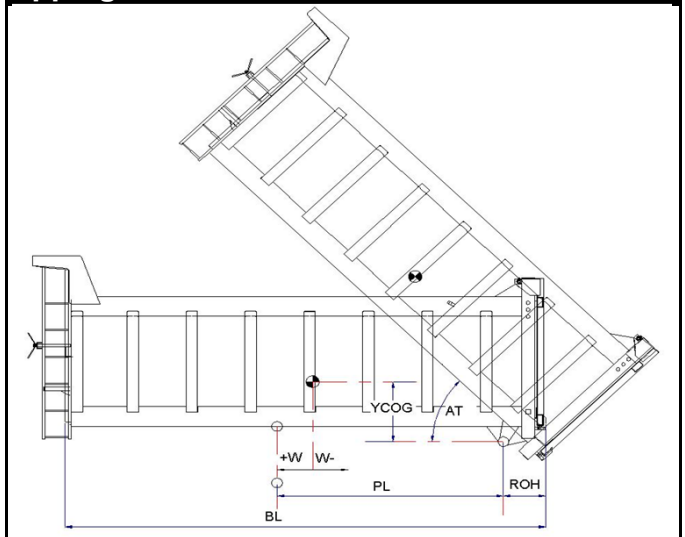
³The cylinder thrust on the first stage (from the HYVA Tipper Program) must not exceed the maximum allowable (see specifications above).

spare parts

seal kit :	719 04 651K
oil inlet swivel adapter ²	3/4" : 731 03 002

²cylinder is delivered including oil inlet swivel adapter

tipping view



tipping weight

AT	46			deg	52		
PL	3230			mm	2860		
YCOG	700			mm	700		
ROH	700			mm	700		
BL	7860	7150	6550	mm	7120	6470	5930
CYL w.r.t. COG (W)	0	360	660	mm	0	320	590
Tipping weight for full stroke of 46°				Tipping weight for full stroke of 52°			
Tipping weight	21	24	27	ton	23	26	30
Tipping weight for second last stage, up to 37°				Tipping weight for 2nd last stage, up to 42°			
Tipping weight	25	28	31	ton	25	28	32

Subject to change without notice.

DO-E 71436709 / 12-08-03 / RV AA